

DATE REVISED	DATE FILMED	DATE REVISED	DATE FILMED	FED. ROAD NO.	STATE	FED. AID PROJ. NO.	SHEET NO.	TOTAL SHEETS
				ARK.				
				JOB NO.	110395	36	203	
				06830	BENTS		47034	

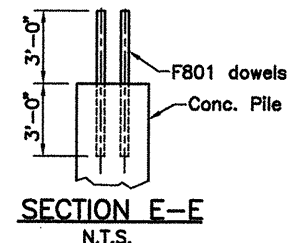
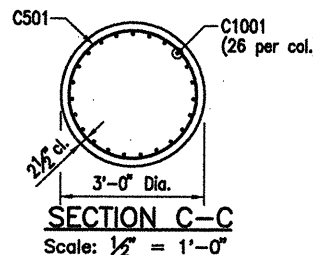
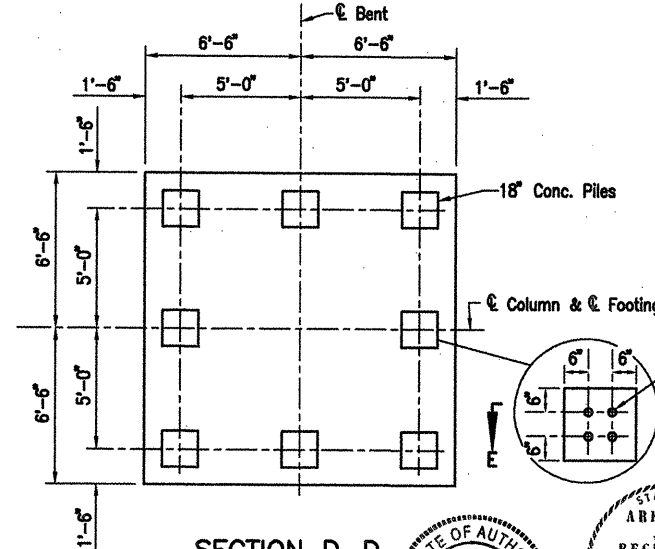
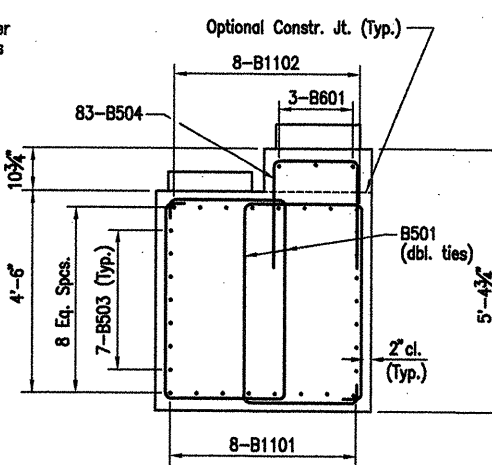
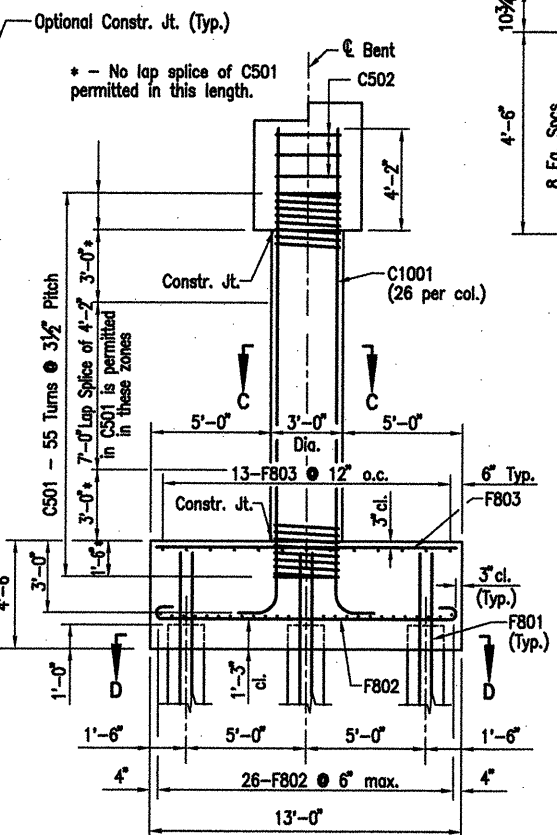
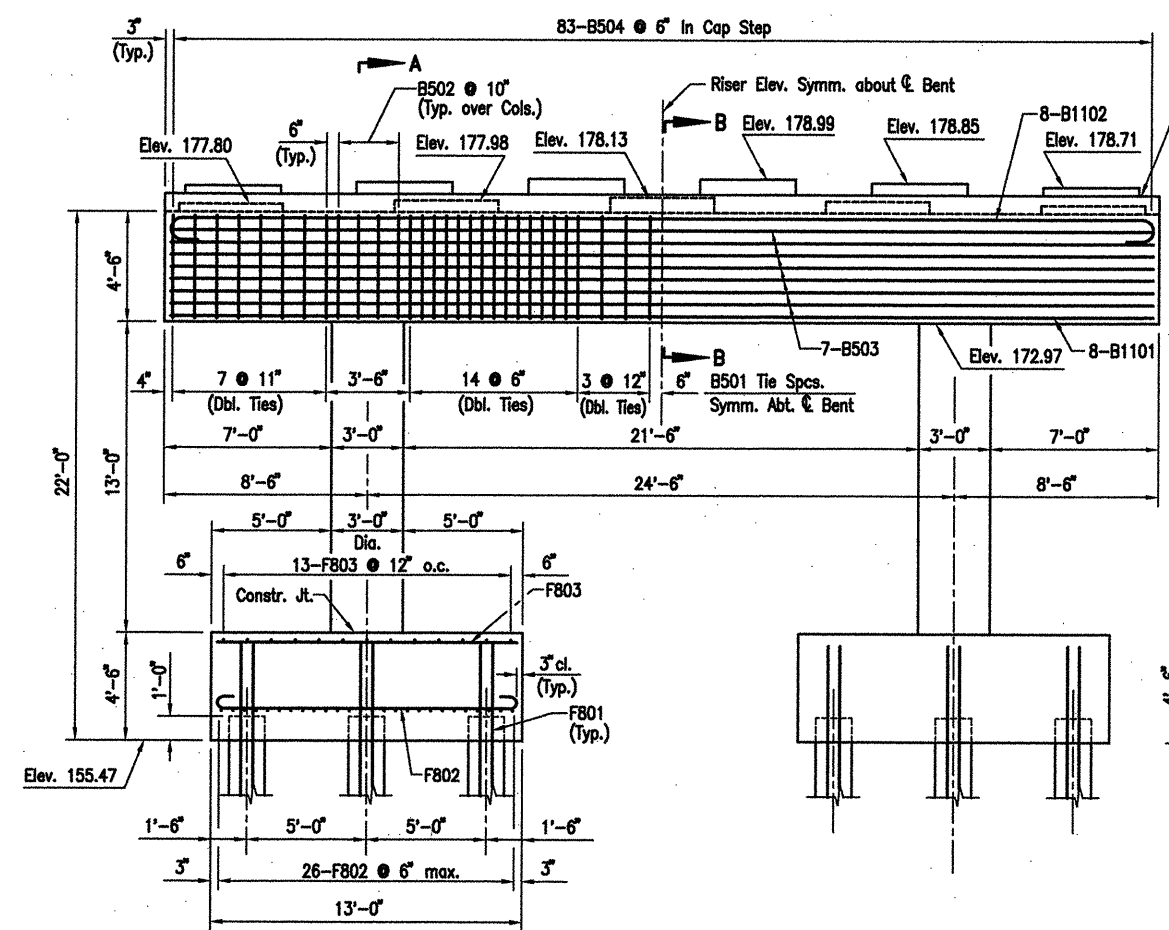
### BAR LIST-PER BENT

Mark	No. Req'd	Length	'A'	'B'	P.D.	Bending Diagrams
B501	104	14'-0"	2'-7"	4'-2"	2 1/2"	Dimensions are out to out of bars.
B502	8	12'-3 1/2"	4'-2"	4'-2"	2 1/2"	
B503	14	41'-2"	1'-11"	2'-2"	2 1/2"	B501
B504	83	6'-0 1/2"	1'-11"	2'-2"	2 1/2"	
B601	3	41'-2"	1'-5"	2'-0"	4 1/2"	B602, B504
B602	30	5'-1"	1'-5"	2'-0"	4 1/2"	
B603	18	7'-4"	3'-8"	2'-0"	4 1/2"	B602 - B605
B604	25	5'-1"	1'-5"	2'-0"	4 1/2"	
B605	15	7'-8"	4'-0"	2'-0"	4 1/2"	B501
B1101	8	41'-2"	41'-2"	1'-0 1/2"	11 1/4"	
B1102	8	44'-2"	41'-2"	1'-0 1/2"	11 1/4"	B602, B1102
C501	2	465'-3"				
C502	6	9'-6"				C1001
C1001	52	21'-8"	20'-2"	1'-10"	9"	
F801	64	6'-0"			Str.	F802, B1102
F802	104	14'-4"	12'-6"	8"	6"	
F803	52	12'-6"			Str.	* - 135° hook around vertical steel

- NOTES:
- All concrete shall be Class "S". All exposed corners to be chamfered 3/4" unless otherwise noted. All concrete shall be poured in the dry.
  - All reinforcing steel shall conform to AASHTO M31 or M53, Gr.60.
  - If anchor bolts are drilled into cap, top reinforcing bars shall be properly placed to avoid damage.
  - For additional information, see Layout.

### NOTES FOR SPIRAL REINFORCING

- Ends of spirals in footing and cap shall have 1 1/2 turns and terminate with a 135° hook and a 24" tail as shown in Bar List.
- Spiral reinforcement at splices of bars in the length designated as permissible for lap splices shall be terminated by a 135° hook with a 10" tail hooked around a vertical bar.
- Spiral reinforcement shall be plain round or deformed steel bars meeting the requirements of AASHTO M31 or M53 (Grade 60) or shall be cold drawn wire meeting the requirements of AASHTO M32 or M225 (Grade 70) with a minimum diameter of 0.625".
- Spiral reinforcement shall be paid for at the contract unit price bid per pound for "Reinforcing Steel - Bridge (Grade 60)". No additional payment shall be made for spacers, splices or bracing needed for assembly, shipping, handling or erecting.
- Lapped splices in spirals shall be lapped 80 bar diameters minimum.
- Adjust spiral pitch as needed to accommodate footing or cap bars.



Drill and grout F801 dowels 3'-0" into piles using an approved non-shrink grout or an epoxy grout listed on the QPL. Diameter of holes and installation procedure shall be as recommended by the grout manufacturer.

### ALTERNATE NO. 1

DETAILS OF BENT - WHITE RIVER BENT 45

WHITE RIVER STR. & APPRS. (CLARENDON) (PH III) (F) MONROE COUNTY

ROUTE 79 SEC. 13

ARKANSAS STATE HIGHWAY COMMISSION  
LITTLE ROCK, ARK.

Engstrom & Modjeski and Masters, Inc.

DRAWN BY: CJA/JDB DATE: Sep. 10 FILENAME: b1103951\_b03  
CHECKED BY: FS DATE: Nov. 01 SCALE: 1/4"=1'-0"  
DESIGNED BY: BMH DATE: Nov. 01  
BRIDGE NO. 06830 DRAWING NO. 47034

BRIDGE ENGINEER